



PORT OF NEWPORT

600 S.E. Bay Blvd.
Newport, OR 97365
Phone 541-265-7758
Fax 541-265-4235

BOARD OF COMMISSIONERS

JoAnn Barton 541-574-6456
Walter Chuck 541-574-9078
Dean Fleck 541-265-9275
David Jincks 541-265-8694
Don Mathews 541-265-6200

GENERAL MANAGER

Don Mann 541-265-7758

DIRECTOR OF FINANCE

Pat Albaugh 541-265-7758

HARBORMASTERS

Kevin Bryant, Commercial
Marina Harbormaster
541-270-5557
Chris Urbach, South Beach
Marina Harbormaster
541-270-5558

**SOUTH BEACH MARINA
AND RV PARK**

Gina Nielsen, Marina Office Supervisor
Phone 541-867-3321
Fax 541-867-3352

INTERNATIONAL TERMINAL

Jim Durkee, Terminal Operations
Supervisor
Phone 541-265-9651
Cell 541-270-0545
Fax 541-574-1053

PORT MEETING SCHEDULE

Work Session, August 28, 12:00 p.m.
Regular Meeting, August 28, 6:00 p.m.

www.portofnewport.com

Port & Starboard is available in color on the Port's website.

International Terminal Project Update

Project Manager Frank Berg, Day CPM Services presented an update on the International Terminal Project to the Port of Newport Board of Commissioners at the regular monthly meeting on July 24. Berg reported that a total credit of \$777,884 has been realized from steel salvaged from the project, and all formwork, reinforcing steel, and tension tie backs have been installed for the dead man/pile cap in the gap area and for the whaler at the sheet pile permanent bulkhead wall. The final environmental report has been submitted to DEQ for a "No Further Action" letter. The Port has applied for a Connect Oregon grant, which, if awarded, would cover some of the six components of the project that remain unfunded at this time.

Teevin Brothers Land & Timber Co., a Rainier-based log handling operation, is looking to establish a log storage, debarking, and sorting operation at the International Terminal. They have engaged an engineer and a wetlands consultant, and are discussing land development costs with a local contractor. The Port of Newport and City of Newport have established a task force to study pedestrian and vehicle safety issues related to truck traffic from the proposed log yard. The task force will meet for the first time in August.

For more information on the International Terminal Project go to the port's website www.portofnewport.com under Port Projects.



Installation of tension rods through the Hennebique

NOAA MOC-P SHIP TRACKER

Bell M. Shimada	Off the Central Oregon Coast
Fairweather	Aleutian Islands
McArthur II	In port in Newport
Oscar Dyson	Bering Sea
Rainier	Kodiak, AK

Research Vessels New Horizon and Point Sur and the ACOE Dredge Yaquina were also at the NOAA pier during the month of July.



SCHEDULE OF EVENTS

- 08/02—Full Moon
- 08/08—Fishermen’s Forum, Operations Shop, Port Dock 7, 8:30 a.m. – 9:30 a.m.
- 08/10—Celebrating NOAA MOC-P, Port Dock 7, 4:30 p.m. – 6:30 p.m.
- 08/11—Great Albacore BBQ Challenge, Port Dock 7, 10:00 a.m. – 4:00 p.m.
- 08/15—Marina Users Meeting, South Beach Marina Activities Room, 8:30 a.m. –9:30
- 08/28—Work Session, 12:00 p.m.
- 08/28—Regular Monthly Meeting, 6:00 p.m.
- Both meetings will be held at the South Beach Marina Activities Room
- 08/31—Blue Moon
- 09/03—Labor Day Holiday—Port Office Closed

PORT OF NEWPORT MEETINGS

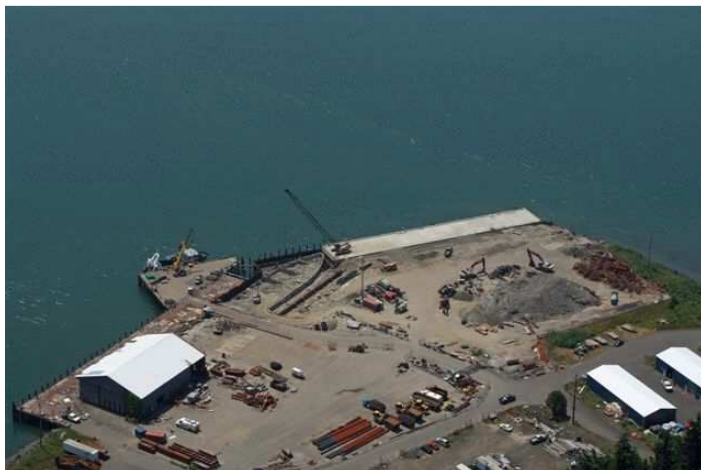
The next work session and regular meeting of the Port of Newport Board of Commissioners will be held on August 28, 2012 at the South Beach Marina Activities Room, 2120 SE Marine Science Drive, Newport. The work session is at noon and the regular meeting starts at 6:00 p.m.

Report from the Shipping Terminal

Pacific Whiting fishing continues and the near shore Whiting fishery is open but fishing has been slow. The Trident meal plant stood by for some time, waiting for something to process.

Foulweather Trawl has been building shrimp nets, cod ends, and excluders, as well as repairing nets.

ILWU Local 53 loaded a container for Rogue Ales’s overseas market.



International Terminal Construction Site with new dock and work in progress at the gap area

During the 2011-2012 fiscal year, approximately 20 fishing vessels moored at the terminal dock for a total of 276 days; approximately 40 fishing vessels used the terminal hoist for a total of 432 hours; 319 hours of forklift service were provided, and 283 hours of crane service were provided. It should be noted that construction was going on at the terminal over that entire period.

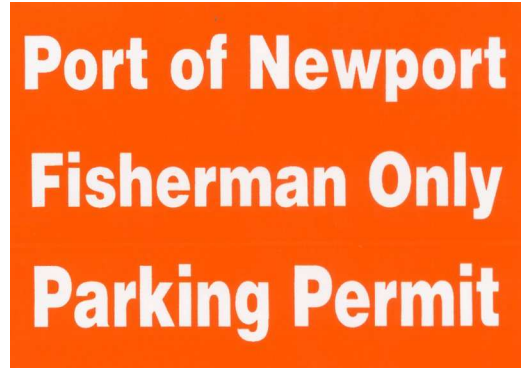
The North Side

Due to increased activity at the commercial docks during the Pacific Whiting and tuna season, all non-commercial activity, such as pleasure boats and people crabbing and fishing off the docks, is prohibited.

Preliminary plans are under discussion for the design and location of a new, permanent Port administration office on the east lot adjacent to the Port Dock 7 entrance.

The current lessees of the Port Dock Marina Fuel Dock, Dale and Kathy Weber, are in the process of selling their business to Steve Carver, of Carson Oil. The sale will be final on August 1 and the Port Commission approved the assignment of the remainder of the Webers' lease to Mr. Carver.

Tuna and salmon is being advertised for sale off the docks at Port Docks 3 and 5 at the commercial marina.



New parking stickers are available at the Port Administration Office. All previously issued parking permits have expired and must be replaced prior to August 31, 2012, to avoid citations. A valid driver's license and commercial fishing license are required to obtain a permit.



Port of Newport General Manager Don Mann, who announced at the regular meeting of June 26 that he would retire at the end of the year, has agreed to extend his retirement through the end of December 2013.

The South Side

The RV Parks and launch ramp have been very busy with groups, campers, and fishermen.

The building repairs have been completed and the final coats of paint applied to the RV Park office and Rogue building.

A recreational boat sank at the dock at South Beach in July. The Coast Guard took charge of the incident and the boat was raised and hauled out. No one was injured.

Engineered drawings are being prepared for the OSMB boarding float project. The individual sections will be replaced in the fall.

Free sand is still available from Mt. NOAA. Call Chris Urbach at 541-270-5558 for more information or to arrange to pick up some sand.



Reminder: The confidential Security Tip Line is back in service. The line is available 24X7 by dialing 541-574-4009.

Port Security: 541-574-2828

THE PORT OF NEWPORT

600 S.E. Bay Blvd.

Newport, OR 97365

www.portofnewport.com



Yaquina Bay Bridge



Celebrate the NOAA Pacific Fleet's first year in Newport!

Giant Weekend Community BBQ Block Party!



Friday, August 10 • 4:30p.m. - 6:30p.m.

Come join in this community celebration and have an old fashioned BBQ Mann Burger (hamburger) or BBQ Don Dog (hot dog) from the BBQ master himself, General Manager Don Mann and his team from the Port of Newport.

Dinner only \$5.00 and includes a side dish, chips & Pepsi product or water!

Ceremony honoring NOAA including a special 1st Year Anniversary cake provided by Chinook Winds



Saturday, August 11 • 10:00a.m. - 4:00p.m.

\$2,000 BBQ Tuna Competition

11:00a.m. - 4:00p.m. • Awards Ceremony - 3:30p.m.

All you can sample of these amazing culinary tuna delights by talented chefs!

Tickets \$10.00 (advance) - \$12.00 at the gate - \$5.00 Youth 6-15



Special Added Attraction – Incredible Classic Car Show featuring



Both Events at Port Dock 7 – 600 S.E. Bay Blvd – Newport's Historic Bayfront

